

Paper Wasp

HYMENOPTERA: Vespidae

Polistes dominula

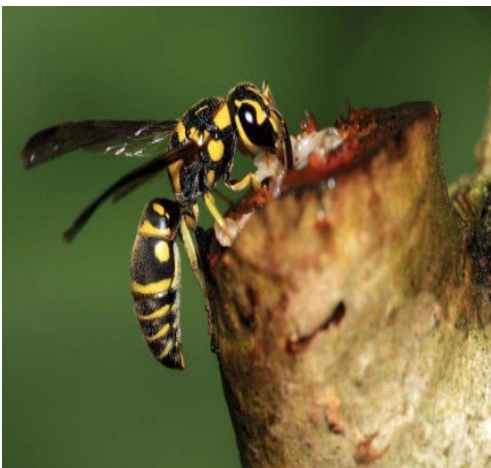


Did You Know? The easiest way to identify paper wasps is probably by their nests, which look like round, upside-down paper combs. The nests are attached to a horizontal surface by a single stalk and can grow in size as the colony reproduces. Some people say the nests look like umbrellas, which is why this insect is sometimes called an umbrella wasp.

Did You Know? That the Paper Wasp sometimes feed on nectar, which helps with pollination, even though they're not nearly as effective as fuzzy-bodied bees. Additionally, adult paper wasps will often chew up those nuisance caterpillars to feed their wasp larvae.

Did You Know? That most paper wasps build their nests out of paper they make from chewing up wood and other vegetation.

Take A Look!!!



Credits:

Photos: <https://www.britannica.com/animal/paper-wasp>

Facts: <https://www.terminix.com/blog/bug-facts/7-facts-about-paper-wasps/#:~:text=Paper%20wasps%20can%20be%20anywhere,do%20not%20have%20fuzzy%20bodies.>

Sheet Created by: Charles King, 9/11/2023