

# Blue Dasher

Odonata: Libellulidae

*Pachydiplax longipennis*



Did you know? Blue Dashers are predators (meaning they hunt for food) and hunt smaller insects like flies and mosquitoes.

They can eat up to 10% of their body weight every day!

Did you know? Blue Dashers have darker or lighter wings depending on where they are. This helps them with thermoregulation – which helps them stay cool in hot places and warm in cold places.

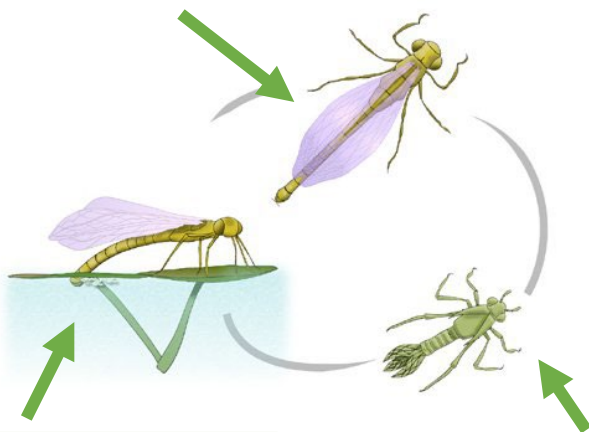
Did you know? Male Blue Dashers are very territorial – they defend their area from other males that come too close. They do this by wagging their blue bodies in the air!

## Look and see!

### Dragonfly Life Cycle

#### Adult

Adults can venture away from the water and look for a mate – another dragonfly to make babies with!



#### Larvae

After coming out of the water, the larvae still live nearby.

#### Nymph

Baby dragonflies after the eggs hatch.

Female



Male



Can you spot the differences between the male and female Blue Dashers?

Credits:

Pictures: Blue Dasher Dragonfly

([https://www.siung.net/bird/tmp2/2013/dragonfly/GH2/P1470166\\_300mm\\_5,6\\_800\\_ISO160\\_hf.w1280.jpg](https://www.siung.net/bird/tmp2/2013/dragonfly/GH2/P1470166_300mm_5,6_800_ISO160_hf.w1280.jpg)); Dragonfly Life Cycle (<https://australian.museum/learn/teachers/learning/dragonfly-life-cycle/>); Male and Female Blue Dashers (<http://azdragonfly.org/species/blue-dasher>)

Information : Insect Identification (<https://www.insectidentification.org/insect-description.php?identification=Blue-Dasher>); Wikipedia ([https://en.wikipedia.org/wiki/Blue\\_dasher](https://en.wikipedia.org/wiki/Blue_dasher))

Created by: Eleanor Bingham, September 2023