

# Jewel Beetle

Coleoptera: Buprestidae

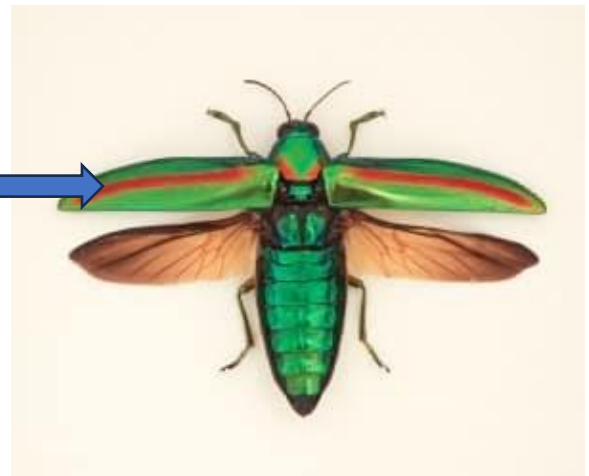
**Did you know?** The Jewel Beetle has an iridescent or shiny shell color due to microscopic texture on the cuticle of the shell that reflects frequencies of light in certain directions. Much like a DVD!



**Did you know?** Jewel beetles love to eat decomposing organic matter. They are known to thrive on deadwood. This means that they can be found all around you! On the ground or up high in trees!

**Did you know?** The Jewel Beetle, and many other beetles, have a hard **carapace** that covers and protects their wings. Whenever they are ready to fly, the carapace moves aside to allow the wings to spread!

This is the carapace that protects the beetle's wings.



The Jewel Beetle goes through four life stages: Egg, larva, pupa, and adult



<https://www.naturalhistorycuriosities.com/insects/jewel-beetles-natural-pieces-of-jewellery/>

<https://cosmosmagazine.com/nature/jewel-beetle-iridescent-wings/>

<https://bugunderglass.com/jewel-beetles-natural-history-and-interesting-facts/#:~:text=Jewel%20beetles%20can%20range%20in,iridescent%20colors%20on%20the%20carapace.>

<https://www.terminix.com/blog/bug-facts/the-life-cycle-of-a-beetle/>